



サイズ追加



超硬ウルトラFXエンドミルテーパシリーズ

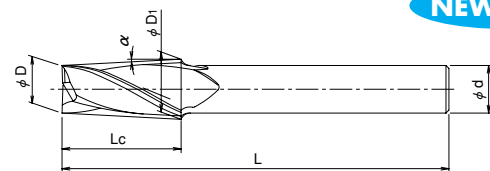
NEW SIZES FX-MG-TPDS

FX-MG-TPMS

NEW FX-MG-TPBDS

長寿命!!テーパ2刃ショート・テーパボール。
サイズ追加でますます充実!

2刃テーパショート形 FX-MG-TPDS



NEW SIZES

- 材質 超硬
- 表面処理 FXコーティング

- ねじれ角 30°
- 勾配角許容差 (テーパ半角許容差)
 (±5' : 勾配角15°以下)
 (±7' : 勾配角20°)

(単位:mm)

(単位:mm)

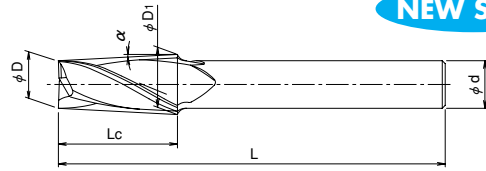
| ツール No. | 外径×勾配角 D×α | 全長 L | 刃長 Lc | シャンク径 d | 大端径 D1 | 在庫 | 参考価 (Yen) |
|---------|---------------|---------|----------|------------|-----------|----|--------------|
| 8536802 | 0.2×0.5° | 40 | 0.8 | 3 | 0.21 | ○ | 16,500 |
| 8536812 | 0.2×1° | 40 | 0.8 | 3 | 0.23 | ○ | 16,500 |
| 8536822 | 0.2×1.5° | 40 | 0.8 | 3 | 0.24 | ○ | 16,500 |
| 8536832 | 0.2×2° | 40 | 0.8 | 3 | 0.26 | ○ | 16,500 |
| 8536842 | 0.2×2.5° | 40 | 0.8 | 3 | 0.27 | ○ | 16,500 |
| 8536852 | 0.2×3° | 40 | 0.8 | 3 | 0.28 | ○ | 16,500 |
| 8536862 | 0.2×4° | 40 | 0.8 | 3 | 0.31 | ○ | 17,600 |
| 8536882 | 0.2×5° | 40 | 0.8 | 3 | 0.34 | ○ | 19,800 |
| 8536892 | 0.2×7° | 40 | 0.8 | 3 | 0.4 | ○ | 21,400 |
| 8536912 | 0.2×10° | 40 | 0.8 | 3 | 0.48 | ○ | 23,700 |
| 8536803 | 0.3×0.5° | 40 | 1.2 | 3 | 0.32 | ○ | 14,100 |
| 8536813 | 0.3×1° | 40 | 1.2 | 3 | 0.34 | ○ | 14,100 |
| 8536823 | 0.3×1.5° | 40 | 1.2 | 3 | 0.36 | ○ | 14,100 |
| 8536833 | 0.3×2° | 40 | 1.2 | 3 | 0.38 | ○ | 14,100 |
| 8536843 | 0.3×2.5° | 40 | 1.2 | 3 | 0.4 | ○ | 14,100 |
| 8536853 | 0.3×3° | 40 | 1.2 | 3 | 0.43 | ○ | 14,100 |
| 8536863 | 0.3×4° | 40 | 1.2 | 3 | 0.47 | ○ | 15,100 |
| 8536883 | 0.3×5° | 40 | 1.2 | 3 | 0.51 | ○ | 16,000 |
| 8536893 | 0.3×7° | 40 | 1.2 | 3 | 0.59 | ○ | 18,000 |
| 8536913 | 0.3×10° | 40 | 1.2 | 3 | 0.72 | ○ | 19,800 |
| 8536804 | 0.4×0.5° | 40 | 1.6 | 3 | 0.43 | ○ | 14,100 |
| 8536814 | 0.4×1° | 40 | 1.6 | 3 | 0.46 | ○ | 14,100 |
| 8536824 | 0.4×1.5° | 40 | 1.6 | 3 | 0.48 | ○ | 14,100 |
| 8536834 | 0.4×2° | 40 | 1.6 | 3 | 0.51 | ○ | 14,100 |
| 8536844 | 0.4×2.5° | 40 | 1.6 | 3 | 0.54 | ○ | 14,100 |
| 8536854 | 0.4×3° | 40 | 1.6 | 3 | 0.57 | ○ | 14,100 |

| ツール No. | 外径×勾配角 D×α | 全長 L | 刃長 Lc | シャンク径 d | 大端径 D1 | 在庫 | 参考価 (Yen) |
|-------------|---------------|---------|----------|------------|-----------|----|--------------|
| 8536864 | 0.4×4° | 40 | 1.6 | 3 | 0.62 | ○ | 15,100 |
| 8536884 | 0.4×5° | 40 | 1.6 | 3 | 0.68 | ○ | 16,000 |
| 8536894 | 0.4×7° | 40 | 1.6 | 3 | 0.79 | ○ | 18,000 |
| 8536914 | 0.4×10° | 40 | 1.6 | 3 | 0.96 | ○ | 19,800 |
| 8536805 | 0.5×0.5° | 40 | 2 | 3 | 0.53 | ○ | 14,100 |
| 8536815 | 0.5×1° | 40 | 2 | 3 | 0.57 | ○ | 14,100 |
| 8536825 | 0.5×1.5° | 40 | 2 | 3 | 0.6 | ○ | 14,100 |
| 8536835 | 0.5×2° | 40 | 2 | 3 | 0.64 | ○ | 14,100 |
| 8536845 | 0.5×2.5° | 40 | 2 | 3 | 0.67 | ○ | 14,100 |
| 8536855 | 0.5×3° | 40 | 2 | 3 | 0.71 | ○ | 14,100 |
| 8536865 | 0.5×4° | 40 | 2 | 3 | 0.78 | ○ | 15,100 |
| 8536885 | 0.5×5° | 40 | 2 | 3 | 0.85 | ○ | 16,000 |
| NEW 8536035 | 0.5×6° | 40 | 2 | 3 | 0.92 | ○ | 17,000 |
| 8536895 | 0.5×7° | 40 | 2 | 3 | 0.99 | ○ | 18,000 |
| 8536915 | 0.5×10° | 40 | 2 | 3 | 1.21 | ○ | 19,800 |
| 8536935 | 0.5×12° | 40 | 2 | 3 | 1.35 | ○ | 20,400 |
| 8536955 | 0.5×15° | 40 | 2 | 3 | 1.57 | ○ | 21,400 |
| NEW 8536165 | 0.5×20° | 45 | 2 | 4 | 1.96 | ○ | 23,400 |
| 8536806 | 0.6×0.5° | 40 | 2 | 3 | 0.63 | ○ | 13,200 |
| 8536816 | 0.6×1° | 40 | 2 | 3 | 0.67 | ○ | 13,200 |
| 8536826 | 0.6×1.5° | 40 | 2 | 3 | 0.7 | ○ | 13,200 |
| 8536836 | 0.6×2° | 40 | 2 | 3 | 0.74 | ○ | 13,200 |
| 8536846 | 0.6×2.5° | 40 | 2 | 3 | 0.77 | ○ | 13,200 |
| 8536856 | 0.6×3° | 40 | 2 | 3 | 0.81 | ○ | 13,200 |
| 8536866 | 0.6×4° | 40 | 2 | 3 | 0.88 | ○ | 14,300 |
| 8536886 | 0.6×5° | 40 | 2 | 3 | 0.95 | ○ | 15,500 |

○=在庫センター標準在庫品

2刃テーパショート形 FX-MG-TPDS

NEW SIZES



(単位:mm)

(単位:mm)

| ツール No. | 外径×勾配角 D×α | 全長 L | 刃長 Lc | シャン径 d | 大端径 D1 | 在庫 | 参考価 (Yen) |
|-------------|---------------|---------|----------|-----------|-----------|----|--------------|
| NEW 8536036 | 0.6× 6° | 40 | 2 | 3 | 1.02 | ○ | 16,700 |
| 8536896 | 0.6× 7° | 40 | 2 | 3 | 1.09 | ○ | 17,800 |
| 8536916 | 0.6× 10° | 40 | 2 | 3 | 1.31 | ○ | 18,900 |
| 8536936 | 0.6× 12° | 40 | 2 | 3 | 1.45 | ○ | 19,700 |
| 8536956 | 0.6× 15° | 40 | 2 | 3 | 1.67 | ○ | 20,300 |
| NEW 8536166 | 0.6× 20° | 45 | 2 | 4 | 2.06 | ○ | 21,400 |
| 8536807 | 0.7× 0.5° | 40 | 2 | 3 | 0.73 | ○ | 13,200 |
| 8536817 | 0.7× 1° | 40 | 2 | 3 | 0.77 | ○ | 13,200 |
| 8536827 | 0.7× 1.5° | 40 | 2 | 3 | 0.8 | ○ | 13,200 |
| 8536837 | 0.7× 2° | 40 | 2 | 3 | 0.84 | ○ | 13,200 |
| 8536847 | 0.7× 2.5° | 40 | 2 | 3 | 0.87 | ○ | 13,200 |
| 8536857 | 0.7× 3° | 40 | 2 | 3 | 0.91 | ○ | 13,200 |
| 8536867 | 0.7× 4° | 40 | 2 | 3 | 0.98 | ○ | 14,300 |
| 8536887 | 0.7× 5° | 40 | 2 | 3 | 1.05 | ○ | 15,500 |
| NEW 8536037 | 0.7× 6° | 40 | 2 | 3 | 1.12 | ○ | 16,700 |
| 8536897 | 0.7× 7° | 40 | 2 | 3 | 1.19 | ○ | 17,800 |
| 8536917 | 0.7× 10° | 40 | 2 | 3 | 1.41 | ○ | 18,900 |
| 8536937 | 0.7× 12° | 40 | 2 | 3 | 1.55 | ○ | 19,700 |
| 8536957 | 0.7× 15° | 40 | 2 | 3 | 1.77 | ○ | 20,300 |
| NEW 8536167 | 0.7× 20° | 45 | 2 | 4 | 2.16 | ○ | 21,400 |
| 8536808 | 0.8× 0.5° | 40 | 2 | 3 | 0.83 | ○ | 13,200 |
| 8536818 | 0.8× 1° | 40 | 2 | 3 | 0.87 | ○ | 13,200 |
| 8536828 | 0.8× 1.5° | 40 | 2 | 3 | 0.9 | ○ | 13,200 |
| 8536838 | 0.8× 2° | 40 | 2 | 3 | 0.94 | ○ | 13,200 |
| 8536848 | 0.8× 2.5° | 40 | 3 | 3 | 1.06 | ○ | 13,200 |
| 8536858 | 0.8× 3° | 40 | 2 | 3 | 1.01 | ○ | 13,200 |
| 8536868 | 0.8× 4° | 40 | 2 | 3 | 1.08 | ○ | 14,300 |
| 8536888 | 0.8× 5° | 40 | 2 | 3 | 1.15 | ○ | 15,500 |
| NEW 8536038 | 0.8× 6° | 40 | 2 | 3 | 1.22 | ○ | 16,700 |
| 8536898 | 0.8× 7° | 40 | 2 | 3 | 1.29 | ○ | 17,800 |
| 8536918 | 0.8× 10° | 40 | 2 | 3 | 1.51 | ○ | 18,900 |
| 8536938 | 0.8× 12° | 40 | 2 | 3 | 1.65 | ○ | 19,700 |
| 8536958 | 0.8× 15° | 40 | 2 | 3 | 1.87 | ○ | 20,300 |
| NEW 8536168 | 0.8× 20° | 50 | 2 | 4 | 2.26 | ○ | 21,400 |
| 8536809 | 0.9× 0.5° | 40 | 2 | 3 | 0.93 | ○ | 13,200 |
| 8536819 | 0.9× 1° | 40 | 2 | 3 | 0.97 | ○ | 13,200 |
| 8536829 | 0.9× 1.5° | 40 | 2 | 3 | 1 | ○ | 13,200 |
| 8536839 | 0.9× 2° | 40 | 2 | 3 | 1.04 | ○ | 13,200 |
| 8536849 | 0.9× 2.5° | 40 | 3 | 3 | 1.16 | ○ | 13,200 |
| 8536859 | 0.9× 3° | 40 | 2 | 3 | 1.11 | ○ | 13,200 |
| 8536869 | 0.9× 4° | 40 | 2 | 3 | 1.18 | ○ | 14,300 |
| 8536889 | 0.9× 5° | 40 | 2 | 3 | 1.25 | ○ | 15,500 |
| NEW 8536039 | 0.9× 6° | 40 | 2 | 3 | 1.32 | ○ | 16,700 |
| 8536899 | 0.9× 7° | 40 | 2 | 3 | 1.39 | ○ | 17,800 |
| 8536919 | 0.9× 10° | 40 | 2 | 3 | 1.61 | ○ | 18,900 |
| 8536939 | 0.9× 12° | 40 | 2 | 3 | 1.75 | ○ | 19,700 |
| 8536959 | 0.9× 15° | 40 | 2 | 3 | 1.97 | ○ | 20,300 |
| NEW 8536169 | 0.9× 20° | 50 | 2 | 4 | 2.36 | ○ | 21,400 |
| NEW 8536772 | 1 × 15' | 50 | 4 | 4 | 1.03 | ○ | 12,700 |
| 8537202 | 1 × 0.5° | 50 | 4 | 4 | 1.07 | ⓑ | 12,700 |

| ツール No. | 外径×勾配角 D×α | 全長 L | 刃長 Lc | シャン径 d | 大端径 D1 | 在庫 | 参考価 (Yen) |
|-------------|---------------|---------|----------|-----------|-----------|----|--------------|
| 8537252 | 1 × 1° | 50 | 4 | 4 | 1.14 | ⓑ | 12,700 |
| 8537302 | 1 × 1.5° | 50 | 4 | 4 | 1.21 | ⓑ | 12,700 |
| 8537352 | 1 × 2° | 50 | 4 | 4 | 1.28 | ⓑ | 12,700 |
| 8537402 | 1 × 2.5° | 50 | 4 | 4 | 1.35 | ○ | 13,400 |
| 8537452 | 1 × 3° | 50 | 4 | 4 | 1.42 | ⓑ | 13,400 |
| 8536870 | 1 × 4° | 50 | 4 | 4 | 1.56 | ○ | 13,400 |
| 8537482 | 1 × 5° | 50 | 4 | 4 | 1.7 | ⓑ | 15,800 |
| NEW 8536042 | 1 × 6° | 50 | 4 | 4 | 1.84 | ○ | 16,400 |
| 8536900 | 1 × 7° | 50 | 4 | 4 | 1.98 | ○ | 17,100 |
| 8536920 | 1 × 10° | 50 | 4 | 4 | 2.41 | ○ | 18,100 |
| 8536940 | 1 × 12° | 50 | 4 | 4 | 2.7 | ○ | 19,700 |
| 8536960 | 1 × 15° | 50 | 4 | 4 | 3.14 | ○ | 20,300 |
| NEW 8536172 | 1 × 20° | 50 | 4 | 4 | 3.91 | ○ | 21,400 |
| NEW 8536773 | 1.5× 15' | 50 | 5 | 4 | 1.54 | ○ | 12,300 |
| 8537203 | 1.5× 0.5° | 50 | 5 | 4 | 1.59 | ⓑ | 12,300 |
| 8537253 | 1.5× 1° | 50 | 5 | 4 | 1.68 | ⓑ | 12,300 |
| 8537303 | 1.5× 1.5° | 50 | 5 | 4 | 1.76 | ⓑ | 12,300 |
| 8537353 | 1.5× 2° | 50 | 5 | 4 | 1.85 | ⓑ | 12,300 |
| 8537403 | 1.5× 2.5° | 50 | 5 | 4 | 1.94 | ○ | 12,600 |
| 8537453 | 1.5× 3° | 50 | 5 | 4 | 2.02 | ⓑ | 12,600 |
| 8536875 | 1.5× 4° | 50 | 5 | 4 | 2.2 | ○ | 12,700 |
| 8537483 | 1.5× 5° | 50 | 5 | 4 | 2.38 | ⓑ | 15,200 |
| NEW 8536043 | 1.5× 6° | 50 | 5 | 4 | 2.55 | ○ | 16,100 |
| 8536905 | 1.5× 7° | 50 | 5 | 4 | 2.73 | ○ | 17,100 |
| 8536925 | 1.5× 10° | 50 | 5 | 4 | 3.26 | ○ | 18,100 |
| 8536945 | 1.5× 12° | 50 | 5 | 4 | 3.63 | ○ | 19,700 |
| 8536965 | 1.5× 15° | 50 | 5 | 4 | 4.18 | ○ | 20,300 |
| NEW 8536173 | 1.5× 20° | 50 | 5 | 4 | 5.14 | ○ | 22,300 |
| NEW 8536774 | 2 × 15' | 50 | 6 | 4 | 2.06 | ○ | 12,300 |
| 8537204 | 2 × 0.5° | 50 | 6 | 4 | 2.11 | ⓑ | 12,300 |
| 8537254 | 2 × 1° | 50 | 6 | 4 | 2.21 | ⓑ | 12,300 |
| 8537304 | 2 × 1.5° | 50 | 6 | 4 | 2.31 | ⓑ | 12,300 |
| 8537354 | 2 × 2° | 50 | 6 | 4 | 2.42 | ⓑ | 12,300 |
| 8537404 | 2 × 2.5° | 50 | 6 | 4 | 2.52 | ○ | 12,600 |
| 8537454 | 2 × 3° | 50 | 6 | 4 | 2.63 | ⓑ | 12,600 |
| NEW 8536014 | 2 × 4° | 50 | 6 | 4 | 2.84 | ○ | 13,900 |
| 8537484 | 2 × 5° | 50 | 6 | 4 | 3.05 | ⓑ | 15,200 |
| NEW 8536044 | 2 × 6° | 50 | 6 | 4 | 3.26 | ○ | 15,300 |
| NEW 8536064 | 2 × 7° | 50 | 6 | 4 | 3.47 | ○ | 17,600 |
| NEW 8536094 | 2 × 10° | 50 | 6 | 4 | 4.12 | ○ | 20,800 |
| NEW 8536124 | 2 × 12° | 50 | 6 | 4 | 4.55 | ○ | 22,000 |
| NEW 8536144 | 2 × 15° | 50 | 6 | 4 | 5.22 | ○ | 23,100 |
| NEW 8536174 | 2 × 20° | 60 | 6 | 6 | 6.37 | ○ | 25,100 |
| NEW 8536775 | 2.5× 15' | 50 | 8 | 4 | 3.05 | ○ | 12,800 |
| 8537205 | 2.5× 0.5° | 50 | 8 | 4 | 2.64 | ⓑ | 12,800 |
| 8537255 | 2.5× 1° | 50 | 8 | 4 | 2.78 | ⓑ | 12,800 |
| 8537305 | 2.5× 1.5° | 50 | 8 | 4 | 2.92 | ⓑ | 12,800 |
| 8537355 | 2.5× 2° | 50 | 8 | 4 | 3.06 | ⓑ | 12,800 |
| 8537405 | 2.5× 2.5° | 50 | 8 | 4 | 3.2 | ○ | 13,300 |
| 8537455 | 2.5× 3° | 50 | 8 | 4 | 3.34 | ⓑ | 13,300 |

勾配角早見表

| | | |
|-----|---|-------|
| 15' | → | 0.25° |
|-----|---|-------|

○ⓑ=在庫センター標準在庫品



次ページへ

2刃テーパショート形 FX-MG-TPDS

NEW SIZES



(単位:mm)

| ツール No. | 外径×勾配角 D×α | 全長 L | 刃長 Lc | シャンク径 d | 大端径 D1 | 在庫 | 参考価 (Yen) |
|-------------|---------------|---------|----------|------------|-----------|----|--------------|
| NEW 8536015 | 2.5× 4° | 50 | 8 | 4 | 3.62 | ○ | 14,200 |
| 8537485 | 2.5× 5° | 50 | 8 | 4 | 3.9 | ◎ | 15,200 |
| NEW 8536045 | 2.5× 6° | 50 | 8 | 4 | 4.18 | ○ | 15,300 |
| NEW 8536065 | 2.5× 7° | 50 | 8 | 4 | 4.46 | ○ | 18,900 |
| NEW 8536095 | 2.5× 10° | 50 | 8 | 4 | 5.32 | ○ | 23,100 |
| NEW 8536125 | 2.5× 12° | 50 | 8 | 4 | 5.9 | ○ | 24,200 |
| NEW 8536145 | 2.5× 15° | 60 | 8 | 6 | 6.79 | ○ | 25,400 |
| NEW 8536175 | 2.5× 20° | 70 | 8 | 8 | 8.32 | ○ | 29,700 |
| NEW 8536776 | 3 × 15' | 60 | 10 | 6 | 3.09 | ○ | 13,500 |
| 8537206 | 3 × 0.5° | 60 | 10 | 6 | 3.18 | ◎ | 13,500 |
| 8537256 | 3 × 1° | 60 | 10 | 6 | 3.35 | ◎ | 13,500 |
| 8537306 | 3 × 1.5° | 60 | 10 | 6 | 3.52 | ◎ | 13,500 |
| 8537356 | 3 × 2° | 60 | 10 | 6 | 3.7 | ◎ | 13,500 |
| 8537406 | 3 × 2.5° | 60 | 10 | 6 | 3.87 | ○ | 14,100 |
| 8537456 | 3 × 3° | 60 | 10 | 6 | 4.05 | ◎ | 14,100 |
| NEW 8536016 | 3 × 4° | 60 | 10 | 6 | 4.4 | ○ | 15,000 |
| 8537486 | 3 × 5° | 60 | 10 | 6 | 4.75 | ◎ | 15,900 |
| NEW 8536046 | 3 × 6° | 60 | 10 | 6 | 5.1 | ○ | 16,400 |
| NEW 8536066 | 3 × 7° | 60 | 10 | 6 | 5.46 | ○ | 22,000 |
| NEW 8536096 | 3 × 10° | 50 | 10 | 6 | 6.53 | ○ | 25,100 |
| NEW 8536126 | 3 × 12° | 60 | 10 | 6 | 7.25 | ○ | 27,400 |
| NEW 8536146 | 3 × 15° | 70 | 10 | 8 | 8.36 | ○ | 29,700 |
| NEW 8536176 | 3 × 20° | 80 | 10 | 10 | 10.28 | ○ | 32,800 |
| NEW 8536778 | 4 × 15' | 60 | 15 | 6 | 4.13 | ○ | 14,200 |
| 8537208 | 4 × 0.5° | 60 | 15 | 6 | 4.26 | ◎ | 14,200 |
| 8537258 | 4 × 1° | 60 | 15 | 6 | 4.52 | ◎ | 14,200 |
| 8537308 | 4 × 1.5° | 60 | 15 | 6 | 4.79 | ◎ | 14,200 |
| 8537358 | 4 × 2° | 60 | 15 | 6 | 5.05 | ◎ | 14,200 |
| 8537408 | 4 × 2.5° | 60 | 15 | 6 | 5.31 | ○ | 15,500 |
| 8537458 | 4 × 3° | 60 | 15 | 6 | 5.57 | ◎ | 15,500 |
| NEW 8536018 | 4 × 4° | 60 | 15 | 6 | 6.1 | ○ | 17,600 |
| 8537488 | 4 × 5° | 60 | 15 | 6 | 6.63 | ◎ | 18,500 |
| NEW 8536048 | 4 × 6° | 60 | 15 | 6 | 7.15 | ○ | 17,600 |
| NEW 8536068 | 4 × 7° | 60 | 15 | 6 | 7.68 | ○ | 23,800 |
| NEW 8536098 | 4 × 10° | 60 | 15 | 6 | 9.29 | ○ | 29,700 |
| NEW 8536128 | 4 × 12° | 80 | 15 | 10 | 10.38 | ○ | 31,100 |
| NEW 8536148 | 4 × 15° | 90 | 15 | 12 | 12.04 | ○ | 32,800 |
| NEW 8536178 | 4 × 20° | 90 | 15 | 12 | 14.92 | ○ | 38,400 |
| NEW 8536780 | 5 × 15' | 60 | 20 | 6 | 5.17 | ○ | 16,400 |
| 8537210 | 5 × 0.5° | 60 | 20 | 6 | 5.35 | ◎ | 16,400 |
| 8537260 | 5 × 1° | 60 | 20 | 6 | 5.7 | ◎ | 16,400 |
| 8537310 | 5 × 1.5° | 60 | 20 | 6 | 6.05 | ◎ | 16,400 |
| 8537360 | 5 × 2° | 60 | 20 | 6 | 6.4 | ◎ | 16,800 |
| 8537410 | 5 × 2.5° | 60 | 20 | 6 | 6.75 | ○ | 17,900 |
| 8537460 | 5 × 3° | 60 | 20 | 6 | 7.1 | ◎ | 17,900 |
| NEW 8536020 | 5 × 4° | 60 | 20 | 6 | 7.8 | ○ | 19,100 |
| 8537490 | 5 × 5° | 70 | 20 | 8 | 8.5 | ◎ | 24,600 |
| NEW 8536050 | 5 × 6° | 70 | 20 | 8 | 9.2 | ○ | 25,100 |
| NEW 8536070 | 5 × 7° | 60 | 20 | 6 | 9.91 | ○ | 25,700 |
| NEW 8536100 | 5 × 10° | 60 | 20 | 6 | 12.05 | ○ | 30,800 |

(単位:mm)

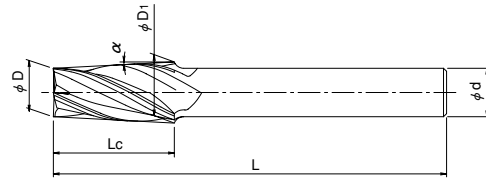
| ツール No. | 外径×勾配角 D×α | 全長 L | 刃長 Lc | シャンク径 d | 大端径 D1 | 在庫 | 参考価 (Yen) |
|-------------|---------------|---------|----------|------------|-----------|----|--------------|
| NEW 8536130 | 5 × 12° | 90 | 20 | 12 | 13.5 | ○ | 38,400 |
| NEW 8536150 | 5 × 15° | 90 | 20 | 12 | 15.72 | ○ | 43,800 |
| NEW 8536180 | 5 × 20° | 100 | 20 | 16 | 19.56 | ○ | 49,200 |
| NEW 8536782 | 6 × 15' | 70 | 20 | 6 | 12.06 | ○ | 18,200 |
| 8537212 | 6 × 0.5° | 60 | 20 | 6 | 6.35 | ◎ | 18,200 |
| 8537262 | 6 × 1° | 60 | 20 | 6 | 6.7 | ◎ | 18,200 |
| 8537312 | 6 × 1.5° | 60 | 20 | 6 | 7.05 | ◎ | 18,200 |
| 8537362 | 6 × 2° | 60 | 20 | 6 | 7.4 | ◎ | 18,200 |
| 8537412 | 6 × 2.5° | 70 | 20 | 8 | 7.75 | ○ | 19,300 |
| 8537462 | 6 × 3° | 70 | 20 | 8 | 8.1 | ◎ | 19,300 |
| NEW 8536022 | 6 × 4° | 70 | 20 | 8 | 8.8 | ○ | 22,900 |
| 8537492 | 6 × 5° | 70 | 20 | 8 | 9.5 | ◎ | 26,500 |
| NEW 8536052 | 6 × 6° | 80 | 20 | 10 | 10.2 | ○ | 27,400 |
| NEW 8536072 | 6 × 7° | 70 | 20 | 8 | 10.91 | ○ | 30,600 |
| NEW 8536102 | 6 × 10° | 90 | 20 | 12 | 13.05 | ○ | 35,100 |
| NEW 8536132 | 6 × 12° | 90 | 20 | 12 | 14.5 | ○ | 40,600 |
| NEW 8536152 | 6 × 15° | 100 | 20 | 16 | 16.72 | ○ | 46,000 |
| NEW 8536182 | 6 × 20° | 120 | 20 | 20 | 20.56 | ○ | 51,500 |
| NEW 8536786 | 8 × 15' | 80 | 25 | 8 | 8.22 | ○ | 24,000 |
| 8537216 | 8 × 0.5° | 70 | 25 | 8 | 8.44 | ◎ | 24,000 |
| 8537266 | 8 × 1° | 70 | 25 | 8 | 8.87 | ◎ | 24,000 |
| 8537316 | 8 × 1.5° | 70 | 25 | 8 | 9.31 | ◎ | 24,000 |
| 8537366 | 8 × 2° | 70 | 25 | 8 | 9.75 | ◎ | 24,000 |
| 8537416 | 8 × 2.5° | 80 | 25 | 10 | 10.18 | ○ | 27,100 |
| 8537466 | 8 × 3° | 90 | 25 | 10 | 10.62 | ◎ | 27,100 |
| 8537496 | 8 × 5° | 90 | 25 | 12 | 12.37 | ◎ | 41,300 |
| NEW 8536076 | 8 × 7° | 80 | 25 | 10 | 14.14 | ○ | 54,000 |
| NEW 8536106 | 8 × 10° | 80 | 25 | 10 | 16.82 | ○ | 77,900 |
| NEW 8536790 | 10 × 15' | 90 | 35 | 10 | 10.31 | ○ | 32,500 |
| 8537220 | 10 × 0.5° | 90 | 35 | 10 | 10.61 | ◎ | 32,500 |
| 8537270 | 10 × 1° | 90 | 35 | 10 | 11.22 | ◎ | 32,500 |
| 8537320 | 10 × 1.5° | 90 | 35 | 10 | 11.83 | ◎ | 34,700 |
| 8537370 | 10 × 2° | 90 | 35 | 12 | 12.44 | ◎ | 43,000 |
| 8537420 | 10 × 2.5° | 90 | 35 | 12 | 13.06 | ○ | 45,200 |
| 8537470 | 10 × 3° | 90 | 35 | 12 | 13.67 | ◎ | 45,200 |
| 8537500 | 10 × 5° | 100 | 35 | 16 | 16.12 | ◎ | 71,700 |
| NEW 8536080 | 10 × 7° | 100 | 35 | 16 | 18.59 | ○ | 79,600 |
| NEW 8536110 | 10 × 10° | 100 | 35 | 16 | 22.34 | ○ | 107,000 |
| NEW 8536794 | 12 × 15' | 90 | 40 | 12 | 12.35 | ○ | 41,700 |
| NEW 8537224 | 12 × 0.5° | 90 | 40 | 12 | 12.7 | ○ | 41,700 |
| NEW 8537274 | 12 × 1° | 90 | 40 | 12 | 13.4 | ○ | 46,800 |
| NEW 8537324 | 12 × 1.5° | 90 | 40 | 12 | 14.09 | ○ | 57,900 |
| NEW 8537374 | 12 × 2° | 90 | 40 | 12 | 14.79 | ○ | 58,500 |
| NEW 8537424 | 12 × 2.5° | 110 | 40 | 16 | 15.49 | ○ | 59,900 |
| NEW 8537474 | 12 × 3° | 110 | 40 | 16 | 16.19 | ○ | 79,600 |
| NEW 8537504 | 12 × 5° | 110 | 40 | 16 | 19 | ○ | 86,700 |
| NEW 8536084 | 12 × 7° | 120 | 40 | 20 | 21.82 | ○ | 93,800 |
| NEW 8536114 | 12 × 10° | 120 | 40 | 20 | 26.11 | ○ | 151,000 |

◎◎=在庫センター標準在庫品

勾配角早見表

| | | |
|-----|---|-------|
| 15' | → | 0.25° |
|-----|---|-------|

4刃テーパショート形 FX-MG-TPMS



- 材質 超硬
- 表面処理 FXコーティング

- ねじれ角 30°
- 勾配角許容差 ±5' (テーパ半角許容差)

(単位:mm)

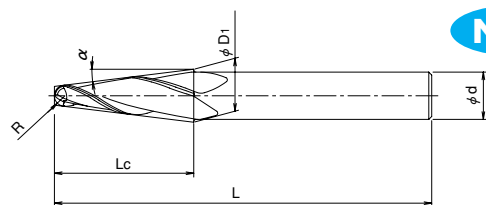
| ツール No. | 外径×勾配角 D×α | 全長 L | 刃長 Lc | シャン径 d | 大端径 D1 | 在庫 | 参考価 (Yen) |
|---------|---------------|---------|----------|-----------|-----------|-----|--------------|
| 8537506 | 3 × 0.5° | 60 | 10 | 6 | 3.18 | (B) | 15,000 |
| 8537556 | 3 × 1° | 60 | 10 | 6 | 3.35 | (B) | 15,000 |
| 8537606 | 3 × 1.5° | 60 | 10 | 6 | 3.52 | (B) | 15,000 |
| 8537656 | 3 × 2° | 60 | 10 | 6 | 3.7 | (B) | 15,000 |
| 8537686 | 3 × 2.5° | 60 | 10 | 6 | 3.87 | ○ | 15,500 |
| 8537756 | 3 × 3° | 60 | 10 | 6 | 4.05 | (B) | 15,500 |
| 8537786 | 3 × 5° | 60 | 10 | 6 | 4.75 | (B) | 17,500 |
| 8537508 | 4 × 0.5° | 60 | 15 | 6 | 4.26 | (B) | 15,600 |
| 8537558 | 4 × 1° | 60 | 15 | 6 | 4.52 | (B) | 15,600 |
| 8537608 | 4 × 1.5° | 60 | 15 | 6 | 4.79 | (B) | 15,600 |
| 8537658 | 4 × 2° | 60 | 15 | 6 | 5.05 | (B) | 15,800 |
| 8537688 | 4 × 2.5° | 60 | 15 | 6 | 5.31 | ○ | 17,000 |
| 8537758 | 4 × 3° | 60 | 15 | 6 | 5.57 | (B) | 17,000 |
| 8537788 | 4 × 5° | 60 | 15 | 6 | 6.63 | (B) | 20,300 |
| 8537510 | 5 × 0.5° | 60 | 20 | 6 | 5.35 | (B) | 18,100 |
| 8537560 | 5 × 1° | 60 | 20 | 6 | 5.7 | (B) | 18,100 |
| 8537610 | 5 × 1.5° | 60 | 20 | 6 | 6.05 | (B) | 18,100 |
| 8537660 | 5 × 2° | 60 | 20 | 6 | 6.4 | (B) | 18,600 |
| 8537690 | 5 × 2.5° | 60 | 20 | 6 | 6.75 | ○ | 19,700 |
| 8537760 | 5 × 3° | 60 | 20 | 6 | 7.1 | (B) | 19,700 |
| 8537790 | 5 × 5° | 70 | 20 | 8 | 8.5 | (B) | 27,100 |
| 8537512 | 6 × 0.5° | 60 | 20 | 6 | 6.35 | (B) | 20,100 |
| 8537562 | 6 × 1° | 60 | 20 | 6 | 6.7 | (B) | 20,100 |
| 8537612 | 6 × 1.5° | 60 | 20 | 6 | 7.05 | (B) | 20,100 |
| 8537662 | 6 × 2° | 60 | 20 | 6 | 7.4 | (B) | 20,100 |
| 8537692 | 6 × 2.5° | 70 | 20 | 8 | 7.75 | ○ | 21,200 |

(単位:mm)

| ツール No. | 外径×勾配角 D×α | 全長 L | 刃長 Lc | シャン径 d | 大端径 D1 | 在庫 | 参考価 (Yen) |
|---------|---------------|---------|----------|-----------|-----------|-----|--------------|
| 8537762 | 6 × 3° | 70 | 20 | 8 | 8.1 | (B) | 21,200 |
| 8537792 | 6 × 5° | 70 | 20 | 8 | 9.5 | (B) | 29,100 |
| 8537516 | 8 × 0.5° | 70 | 25 | 8 | 8.44 | (B) | 26,500 |
| 8537566 | 8 × 1° | 70 | 25 | 8 | 8.87 | (B) | 26,500 |
| 8537616 | 8 × 1.5° | 70 | 25 | 8 | 9.31 | (B) | 26,500 |
| 8537666 | 8 × 2° | 70 | 25 | 8 | 9.75 | (B) | 26,500 |
| 8537696 | 8 × 2.5° | 90 | 25 | 10 | 10.18 | ○ | 29,400 |
| 8537766 | 8 × 3° | 90 | 25 | 10 | 10.62 | (B) | 29,400 |
| 8537796 | 8 × 5° | 90 | 25 | 12 | 12.37 | (B) | 45,700 |
| 8537520 | 10 × 0.5° | 90 | 35 | 10 | 10.61 | (B) | 35,600 |
| 8537570 | 10 × 1° | 90 | 35 | 10 | 11.22 | (B) | 35,600 |
| 8537620 | 10 × 1.5° | 90 | 35 | 10 | 11.83 | (B) | 38,100 |
| 8537670 | 10 × 2° | 90 | 35 | 12 | 12.44 | (B) | 47,500 |
| 8537700 | 10 × 2.5° | 90 | 35 | 12 | 13.06 | ○ | 50,000 |
| 8537770 | 10 × 3° | 90 | 35 | 12 | 13.67 | (B) | 50,000 |
| 8537800 | 10 × 5° | 100 | 35 | 16 | 16.12 | (B) | 78,800 |

○(B)=在庫センター標準在庫品

2刃テーパボール ショート形 FX-MG-TPBDS



NEW

- 材質 超硬
- 表面处理 FXコーティング

- ねじれ角 30°
- 勾配角許容差 ±5°
(テーパ半角許容差)

(単位:mm)

| ツール No. | R×勾配角 R×α | 全長 L | 刃長 Lc | シャン径 d | 大端径 D1 | 在庫 | 参考価 (Yen) |
|-------------|--------------|---------|----------|-----------|-----------|----|--------------|
| NEW 8554002 | R0.1 × 0.5° | 40 | 0.8 | 4 | 0.21 | ○ | 24,600 |
| NEW 8554052 | R0.1 × 1° | 40 | 0.8 | 4 | 0.22 | ○ | 24,600 |
| NEW 8554102 | R0.1 × 1.5° | 40 | 0.8 | 4 | 0.24 | ○ | 24,600 |
| NEW 8554152 | R0.1 × 2° | 40 | 0.8 | 4 | 0.25 | ○ | 24,600 |
| NEW 8553902 | R0.1 × 2.5° | 40 | 0.8 | 4 | 0.26 | ○ | 24,600 |
| NEW 8554202 | R0.1 × 3° | 40 | 0.8 | 4 | 0.27 | ○ | 24,600 |
| NEW 8554302 | R0.1 × 5° | 40 | 0.8 | 4 | 0.32 | ○ | 27,700 |
| NEW 8554352 | R0.1 × 7° | 40 | 0.8 | 4 | 0.37 | ○ | 25,900 |
| NEW 8554402 | R0.1 × 10° | 40 | 0.8 | 4 | 0.45 | ○ | 31,400 |
| NEW 8554003 | R0.15 × 0.5° | 40 | 1.2 | 4 | 0.32 | ○ | 20,100 |
| NEW 8554053 | R0.15 × 1° | 40 | 1.2 | 4 | 0.34 | ○ | 20,100 |
| NEW 8554103 | R0.15 × 1.5° | 40 | 1.2 | 4 | 0.35 | ○ | 20,100 |
| NEW 8554153 | R0.15 × 2° | 40 | 1.2 | 4 | 0.37 | ○ | 20,100 |
| NEW 8553903 | R0.15 × 2.5° | 40 | 1.2 | 4 | 0.39 | ○ | 20,100 |
| NEW 8554203 | R0.15 × 3° | 40 | 1.2 | 4 | 0.41 | ○ | 20,100 |
| NEW 8554303 | R0.15 × 5° | 40 | 1.2 | 4 | 0.48 | ○ | 22,000 |
| NEW 8554353 | R0.15 × 7° | 40 | 1.2 | 4 | 0.56 | ○ | 23,800 |
| NEW 8554403 | R0.15 × 10° | 40 | 1.2 | 4 | 0.67 | ○ | 25,900 |
| NEW 8554453 | R0.15 × 15° | 40 | 1.5 | 4 | 1.03 | ○ | 30,400 |
| NEW 8554004 | R0.2 × 0.5° | 40 | 1.6 | 4 | 0.42 | ○ | 16,400 |
| NEW 8554054 | R0.2 × 1° | 40 | 1.6 | 4 | 0.45 | ○ | 16,400 |
| NEW 8554104 | R0.2 × 1.5° | 40 | 1.6 | 4 | 0.47 | ○ | 16,400 |
| NEW 8554154 | R0.2 × 2° | 40 | 1.6 | 4 | 0.5 | ○ | 16,400 |
| NEW 8553904 | R0.2 × 2.5° | 40 | 1.6 | 4 | 0.52 | ○ | 16,400 |
| NEW 8554204 | R0.2 × 3° | 40 | 1.6 | 4 | 0.55 | ○ | 16,400 |
| NEW 8554304 | R0.2 × 5° | 40 | 1.6 | 4 | 0.65 | ○ | 18,400 |
| NEW 8554354 | R0.2 × 7° | 40 | 1.6 | 4 | 0.75 | ○ | 20,400 |
| NEW 8554404 | R0.2 × 10° | 40 | 1.6 | 4 | 0.9 | ○ | 22,300 |
| NEW 8554454 | R0.2 × 15° | 40 | 2 | 4 | 1.38 | ○ | 25,400 |
| NEW 8554005 | R0.25 × 0.5° | 40 | 2 | 4 | 0.53 | ○ | 16,400 |
| NEW 8554055 | R0.25 × 1° | 40 | 2 | 4 | 0.56 | ○ | 16,400 |
| NEW 8554105 | R0.25 × 1.5° | 40 | 2 | 4 | 0.59 | ○ | 16,400 |
| NEW 8554155 | R0.25 × 2° | 40 | 2 | 4 | 0.62 | ○ | 16,400 |
| NEW 8553905 | R0.25 × 2.5° | 40 | 2 | 4 | 0.65 | ○ | 16,400 |
| NEW 8554205 | R0.25 × 3° | 40 | 2 | 4 | 0.68 | ○ | 16,400 |
| NEW 8554305 | R0.25 × 5° | 40 | 2 | 4 | 0.81 | ○ | 18,400 |
| NEW 8554355 | R0.25 × 7° | 40 | 2 | 4 | 0.93 | ○ | 20,400 |
| NEW 8554405 | R0.25 × 10° | 40 | 2 | 4 | 1.12 | ○ | 22,300 |
| NEW 8554455 | R0.25 × 15° | 40 | 2.5 | 4 | 1.72 | ○ | 23,700 |
| NEW 8554006 | R0.3 × 0.5° | 40 | 2 | 4 | 0.63 | ○ | 15,500 |
| NEW 8554056 | R0.3 × 1° | 40 | 2 | 4 | 0.66 | ○ | 15,500 |
| NEW 8554106 | R0.3 × 1.5° | 40 | 2 | 4 | 0.69 | ○ | 15,500 |

(単位:mm)

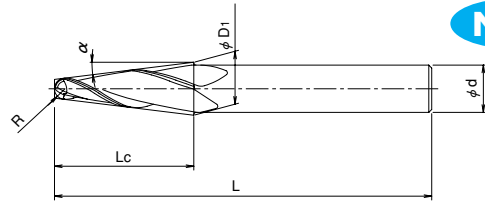
| ツール No. | R×勾配角 R×α | 全長 L | 刃長 Lc | シャン径 d | 大端径 D1 | 在庫 | 参考価 (Yen) |
|-------------|--------------|---------|----------|-----------|-----------|----|--------------|
| NEW 8554156 | R0.3 × 2° | 40 | 2 | 4 | 0.72 | ○ | 15,500 |
| NEW 8553906 | R0.3 × 2.5° | 40 | 2 | 4 | 0.75 | ○ | 15,500 |
| NEW 8554206 | R0.3 × 3° | 40 | 2 | 4 | 0.78 | ○ | 15,500 |
| NEW 8554306 | R0.3 × 5° | 40 | 2 | 4 | 0.9 | ○ | 17,900 |
| NEW 8554356 | R0.3 × 7° | 40 | 2 | 4 | 1.02 | ○ | 20,400 |
| NEW 8554406 | R0.3 × 10° | 40 | 2 | 4 | 1.21 | ○ | 21,400 |
| NEW 8554456 | R0.3 × 15° | 40 | 3 | 4 | 2.07 | ○ | 22,500 |
| NEW 8554007 | R0.35 × 0.5° | 40 | 2 | 4 | 0.73 | ○ | 15,500 |
| NEW 8554057 | R0.35 × 1° | 40 | 2 | 4 | 0.76 | ○ | 15,500 |
| NEW 8554107 | R0.35 × 1.5° | 40 | 2 | 4 | 0.79 | ○ | 15,500 |
| NEW 8554157 | R0.35 × 2° | 40 | 2 | 4 | 0.82 | ○ | 15,500 |
| NEW 8553907 | R0.35 × 2.5° | 40 | 2 | 4 | 0.84 | ○ | 15,500 |
| NEW 8554207 | R0.35 × 3° | 40 | 2 | 4 | 0.87 | ○ | 15,500 |
| NEW 8554307 | R0.35 × 5° | 40 | 2 | 4 | 0.99 | ○ | 17,900 |
| NEW 8554357 | R0.35 × 7° | 40 | 2 | 4 | 1.11 | ○ | 20,300 |
| NEW 8554407 | R0.35 × 10° | 40 | 2 | 4 | 1.29 | ○ | 21,400 |
| NEW 8554457 | R0.35 × 15° | 40 | 3 | 4 | 2.14 | ○ | 22,500 |
| NEW 8554008 | R0.4 × 0.5° | 40 | 3 | 4 | 0.85 | ○ | 15,500 |
| NEW 8554058 | R0.4 × 1° | 40 | 3 | 4 | 0.89 | ○ | 15,500 |
| NEW 8554108 | R0.4 × 1.5° | 40 | 3 | 4 | 0.94 | ○ | 15,500 |
| NEW 8554158 | R0.4 × 2° | 40 | 3 | 4 | 0.98 | ○ | 15,500 |
| NEW 8553908 | R0.4 × 2.5° | 40 | 3 | 4 | 1.03 | ○ | 15,500 |
| NEW 8554208 | R0.4 × 3° | 40 | 3 | 4 | 1.07 | ○ | 15,500 |
| NEW 8554308 | R0.4 × 5° | 40 | 3 | 4 | 1.26 | ○ | 17,900 |
| NEW 8554358 | R0.4 × 7° | 40 | 3 | 4 | 1.44 | ○ | 20,300 |
| NEW 8554408 | R0.4 × 10° | 40 | 3 | 4 | 1.73 | ○ | 21,400 |
| NEW 8554458 | R0.4 × 15° | 40 | 4 | 4 | 2.76 | ○ | 22,500 |
| NEW 8554009 | R0.45 × 0.5° | 40 | 3 | 4 | 0.94 | ○ | 15,500 |
| NEW 8554059 | R0.45 × 1° | 40 | 3 | 4 | 0.99 | ○ | 15,500 |
| NEW 8554109 | R0.45 × 1.5° | 40 | 3 | 4 | 1.03 | ○ | 15,500 |
| NEW 8554159 | R0.45 × 2° | 40 | 3 | 4 | 1.08 | ○ | 15,500 |
| NEW 8553909 | R0.45 × 2.5° | 40 | 3 | 4 | 1.12 | ○ | 15,500 |
| NEW 8554209 | R0.45 × 3° | 40 | 3 | 4 | 1.17 | ○ | 15,500 |
| NEW 8554309 | R0.45 × 5° | 40 | 3 | 4 | 1.35 | ○ | 17,900 |
| NEW 8554359 | R0.45 × 7° | 40 | 3 | 4 | 1.53 | ○ | 20,300 |
| NEW 8554409 | R0.45 × 10° | 40 | 3 | 4 | 1.81 | ○ | 21,400 |
| NEW 8554459 | R0.45 × 15° | 40 | 4 | 4 | 2.83 | ○ | 22,500 |
| NEW 8554010 | R0.5 × 0.5° | 40 | 4 | 4 | 1.06 | ○ | 15,100 |
| NEW 8554060 | R0.5 × 1° | 40 | 4 | 4 | 1.12 | ○ | 15,500 |
| NEW 8554110 | R0.5 × 1.5° | 40 | 4 | 4 | 1.18 | ○ | 15,100 |
| NEW 8554160 | R0.5 × 2° | 40 | 4 | 4 | 1.25 | ○ | 15,100 |
| NEW 8553910 | R0.5 × 2.5° | 40 | 4 | 4 | 1.31 | ○ | 15,800 |

○=在庫センター標準在庫品



次ページへ

2刃テーパボール ショート形 FX-MG-TPBDS



NEW

(単位:mm)

(単位:mm)

| ツール No. | R×勾配角 R×α | 全長 L | 刃長 Lc | シャン径 d | 大端径 D1 | 在庫 | 参考価 (Yen) |
|-------------|--------------|---------|----------|-----------|-----------|----|--------------|
| NEW 8554210 | R0.5 × 3° | 40 | 4 | 4 | 1.37 | ○ | 15,800 |
| NEW 8554310 | R0.5 × 5° | 40 | 4 | 4 | 1.62 | ○ | 18,100 |
| NEW 8554360 | R0.5 × 7° | 40 | 4 | 4 | 1.87 | ○ | 19,500 |
| NEW 8554410 | R0.5 × 10° | 40 | 4 | 4 | 2.25 | ○ | 20,600 |
| NEW 8554460 | R0.5 × 15° | 40 | 4 | 4 | 2.91 | ○ | 22,500 |
| NEW 8554062 | R0.6 × 1° | 40 | 5 | 4 | 1.35 | ○ | 14,600 |
| NEW 8554162 | R0.6 × 2° | 40 | 5 | 4 | 1.51 | ○ | 14,600 |
| NEW 8554212 | R0.6 × 3° | 40 | 5 | 4 | 1.66 | ○ | 15,000 |
| NEW 8554312 | R0.6 × 5° | 40 | 5 | 4 | 1.97 | ○ | 17,600 |
| NEW 8554362 | R0.6 × 7° | 40 | 5 | 4 | 2.29 | ○ | 19,500 |
| NEW 8554412 | R0.6 × 10° | 40 | 5 | 4 | 2.77 | ○ | 20,600 |
| NEW 8554462 | R0.6 × 15° | 40 | 5 | 4 | 3.6 | ○ | 22,500 |
| NEW 8554015 | R0.75 × 0.5° | 40 | 6 | 4 | 1.59 | ○ | 14,600 |
| NEW 8554065 | R0.75 × 1° | 40 | 6 | 4 | 1.68 | ○ | 14,600 |
| NEW 8554115 | R0.75 × 1.5° | 40 | 6 | 4 | 1.78 | ○ | 14,600 |
| NEW 8554165 | R0.75 × 2° | 40 | 6 | 4 | 1.87 | ○ | 14,600 |
| NEW 8553915 | R0.75 × 2.5° | 40 | 5 | 4 | 1.87 | ○ | 15,000 |
| NEW 8554215 | R0.75 × 3° | 40 | 6 | 4 | 2.05 | ○ | 15,000 |
| NEW 8554315 | R0.75 × 5° | 40 | 6 | 4 | 2.42 | ○ | 17,600 |
| NEW 8554365 | R0.75 × 7° | 40 | 6 | 4 | 2.8 | ○ | 19,500 |
| NEW 8554415 | R0.75 × 10° | 40 | 6 | 4 | 3.37 | ○ | 20,600 |
| NEW 8554465 | R0.75 × 15° | 40 | 6 | 4 | 4.37 | ○ | 22,500 |
| NEW 8554066 | R0.8 × 1° | 40 | 6 | 4 | 1.78 | ○ | 14,600 |
| NEW 8554166 | R0.8 × 2° | 40 | 6 | 4 | 1.96 | ○ | 14,600 |
| NEW 8554216 | R0.8 × 3° | 40 | 6 | 4 | 2.15 | ○ | 15,000 |
| NEW 8554316 | R0.8 × 5° | 40 | 6 | 4 | 2.52 | ○ | 17,600 |
| NEW 8554366 | R0.8 × 7° | 40 | 6 | 4 | 2.89 | ○ | 19,800 |
| NEW 8554416 | R0.8 × 10° | 40 | 6 | 4 | 3.46 | ○ | 20,600 |
| NEW 8554466 | R0.8 × 15° | 40 | 6 | 4 | 4.44 | ○ | 24,600 |
| NEW 8554020 | R1 × 0.5° | 40 | 8 | 4 | 2.12 | ○ | 14,600 |
| NEW 8554070 | R1 × 1° | 40 | 8 | 4 | 2.24 | ○ | 14,600 |
| NEW 8554120 | R1 × 1.5° | 40 | 8 | 4 | 2.37 | ○ | 14,600 |
| NEW 8554170 | R1 × 2° | 40 | 8 | 4 | 2.49 | ○ | 14,600 |
| NEW 8553920 | R1 × 2.5° | 40 | 6 | 4 | 2.44 | ○ | 15,000 |
| NEW 8554220 | R1 × 3° | 40 | 8 | 4 | 2.74 | ○ | 15,000 |
| NEW 8554270 | R1 × 4° | 40 | 8 | 4 | 2.98 | ○ | 16,300 |
| NEW 8554320 | R1 × 5° | 40 | 8 | 4 | 3.23 | ○ | 17,600 |
| NEW 8554370 | R1 × 7° | 40 | 8 | 4 | 3.73 | ○ | 19,800 |
| NEW 8554420 | R1 × 10° | 40 | 8 | 4 | 4.5 | ○ | 23,100 |
| NEW 8554470 | R1 × 15° | 40 | 8 | 6 | 5.82 | ○ | 25,400 |
| NEW 8554025 | R1.25 × 0.5° | 45 | 10 | 4 | 2.65 | ○ | 15,200 |
| NEW 8554075 | R1.25 × 1° | 45 | 10 | 4 | 2.81 | ○ | 15,200 |
| NEW 8554125 | R1.25 × 1.5° | 45 | 10 | 4 | 2.96 | ○ | 15,200 |
| NEW 8554175 | R1.25 × 2° | 45 | 10 | 4 | 3.11 | ○ | 15,200 |
| NEW 8553925 | R1.25 × 2.5° | 45 | 8 | 4 | 3.09 | ○ | 15,600 |
| NEW 8554225 | R1.25 × 3° | 45 | 10 | 4 | 3.42 | ○ | 15,600 |
| NEW 8554275 | R1.25 × 4° | 45 | 10 | 4 | 3.73 | ○ | 16,500 |
| NEW 8554325 | R1.25 × 5° | 45 | 10 | 6 | 4.04 | ○ | 17,600 |
| NEW 8554375 | R1.25 × 7° | 45 | 10 | 6 | 4.67 | ○ | 21,400 |
| NEW 8554425 | R1.25 × 10° | 45 | 10 | 6 | 5.62 | ○ | 25,400 |

| ツール No. | R×勾配角 R×α | 全長 L | 刃長 Lc | シャン径 d | 大端径 D1 | 在庫 | 参考価 (Yen) |
|-------------|--------------|---------|----------|-----------|-----------|----|--------------|
| NEW 8554475 | R1.25 × 15° | 45 | 10 | 6 | 7.28 | ○ | 27,600 |
| NEW 8554030 | R1.5 × 0.5° | 45 | 12 | 6 | 3.18 | ○ | 15,900 |
| NEW 8554080 | R1.5 × 1° | 45 | 12 | 6 | 3.37 | ○ | 15,900 |
| NEW 8554130 | R1.5 × 1.5° | 45 | 12 | 6 | 3.55 | ○ | 15,900 |
| NEW 8554180 | R1.5 × 2° | 45 | 12 | 6 | 3.74 | ○ | 15,900 |
| NEW 8553930 | R1.5 × 2.5° | 45 | 10 | 6 | 3.75 | ○ | 16,400 |
| NEW 8554230 | R1.5 × 3° | 45 | 12 | 6 | 4.1 | ○ | 16,400 |
| NEW 8554280 | R1.5 × 4° | 45 | 12 | 6 | 4.48 | ○ | 17,300 |
| NEW 8554330 | R1.5 × 5° | 45 | 12 | 6 | 4.85 | ○ | 18,200 |
| NEW 8554380 | R1.5 × 7° | 45 | 12 | 6 | 5.6 | ○ | 24,200 |
| NEW 8554430 | R1.5 × 10° | 45 | 12 | 6 | 6.75 | ○ | 27,400 |
| NEW 8554480 | R1.5 × 15° | 45 | 12 | 8 | 8.73 | ○ | 32,100 |
| NEW 8554034 | R2 × 0.5° | 50 | 15 | 6 | 4.23 | ○ | 16,500 |
| NEW 8554084 | R2 × 1° | 50 | 15 | 6 | 4.45 | ○ | 16,500 |
| NEW 8554134 | R2 × 1.5° | 50 | 15 | 6 | 4.68 | ○ | 16,500 |
| NEW 8554184 | R2 × 2° | 50 | 15 | 6 | 4.91 | ○ | 16,500 |
| NEW 8553934 | R2 × 2.5° | 50 | 15 | 6 | 5.14 | ○ | 17,900 |
| NEW 8554234 | R2 × 3° | 50 | 15 | 6 | 5.37 | ○ | 17,900 |
| NEW 8554284 | R2 × 4° | 50 | 15 | 6 | 5.83 | ○ | 20,100 |
| NEW 8554334 | R2 × 5° | 50 | 15 | 6 | 6.29 | ○ | 20,800 |
| NEW 8554384 | R2 × 7° | 50 | 15 | 6 | 7.22 | ○ | 26,300 |
| NEW 8554434 | R2 × 10° | 50 | 15 | 8 | 8.65 | ○ | 32,100 |
| NEW 8554484 | R2 × 15° | 50 | 15 | 10 | 11.11 | ○ | 35,100 |
| NEW 8554035 | R2.5 × 0.5° | 55 | 18 | 6 | 5.27 | ○ | 18,800 |
| NEW 8554085 | R2.5 × 1° | 55 | 18 | 6 | 5.54 | ○ | 18,800 |
| NEW 8554135 | R2.5 × 1.5° | 55 | 18 | 6 | 5.81 | ○ | 18,800 |
| NEW 8554185 | R2.5 × 2° | 55 | 18 | 6 | 6.09 | ○ | 19,100 |
| NEW 8554235 | R2.5 × 3° | 55 | 18 | 6 | 6.63 | ○ | 20,300 |
| NEW 8554285 | R2.5 × 4° | 55 | 18 | 6 | 7.18 | ○ | 21,400 |
| NEW 8554335 | R2.5 × 5° | 55 | 18 | 8 | 7.73 | ○ | 26,800 |
| NEW 8554385 | R2.5 × 7° | 55 | 18 | 8 | 8.84 | ○ | 28,000 |
| NEW 8554435 | R2.5 × 10° | 55 | 18 | 10 | 10.54 | ○ | 33,000 |
| NEW 8554036 | R3 × 0.5° | 60 | 22 | 6 | 6.33 | ○ | 20,600 |
| NEW 8554086 | R3 × 1° | 60 | 22 | 6 | 6.66 | ○ | 20,600 |
| NEW 8554136 | R3 × 1.5° | 60 | 22 | 6 | 7 | ○ | 20,600 |
| NEW 8554186 | R3 × 2° | 60 | 22 | 6 | 7.33 | ○ | 20,600 |
| NEW 8554236 | R3 × 3° | 60 | 22 | 6 | 8 | ○ | 21,700 |
| NEW 8554286 | R3 × 4° | 60 | 22 | 8 | 8.67 | ○ | 25,100 |
| NEW 8554336 | R3 × 5° | 60 | 22 | 8 | 9.35 | ○ | 28,900 |
| NEW 8554386 | R3 × 7° | 60 | 22 | 10 | 10.71 | ○ | 32,800 |
| NEW 8554436 | R3 × 10° | 60 | 22 | 12 | 12.79 | ○ | 37,300 |
| NEW 8554038 | R4 × 0.5° | 70 | 26 | 8 | 8.38 | ○ | 26,300 |
| NEW 8554088 | R4 × 1° | 70 | 26 | 8 | 8.77 | ○ | 26,300 |
| NEW 8554138 | R4 × 1.5° | 70 | 26 | 8 | 9.15 | ○ | 26,300 |
| NEW 8554188 | R4 × 2° | 70 | 26 | 8 | 9.54 | ○ | 26,300 |
| NEW 8554238 | R4 × 3° | 70 | 26 | 10 | 10.32 | ○ | 29,300 |
| NEW 8554288 | R4 × 4° | 70 | 26 | 10 | 11.1 | ○ | 36,200 |
| NEW 8554338 | R4 × 5° | 70 | 26 | 12 | 11.88 | ○ | 43,800 |
| NEW 8554388 | R4 × 7° | 70 | 26 | 12 | 13.46 | ○ | 56,200 |
| NEW 8554040 | R5 × 0.5° | 75 | 30 | 10 | 10.44 | ○ | 34,700 |

○=在庫センター標準在庫品



次ページへ

2刃テーパボール ショート形 FX-MG-TPBDS

NEW



(単位:mm)

| ツール No. | R×勾配角 R×α | 全長 L | 刃長 Lc | シャンク径 d | 大端径 D1 | 在庫 | 参考価 (Yen) |
|--------------------|------------------|---------|----------|------------|-----------|----|--------------|
| NEW 8554090 | R5 × 1° | 75 | 30 | 10 | 10.87 | ○ | 34,700 |
| NEW 8554140 | R5 × 1.5° | 75 | 30 | 10 | 11.31 | ○ | 37,000 |
| NEW 8554190 | R5 × 2° | 75 | 30 | 10 | 11.75 | ○ | 45,200 |
| NEW 8554240 | R5 × 3° | 75 | 30 | 12 | 12.63 | ○ | 47,700 |
| NEW 8554290 | R5 × 4° | 75 | 30 | 12 | 13.52 | ○ | 57,000 |
| NEW 8554340 | R5 × 5° | 75 | 30 | 12 | 14.41 | ○ | 74,100 |
| NEW 8554390 | R5 × 7° | 75 | 30 | 16 | 16.21 | ○ | 81,900 |
| NEW 8554042 | R6 × 0.5° | 90 | 36 | 12 | 12.52 | ○ | 44,000 |
| NEW 8554092 | R6 × 1° | 90 | 36 | 12 | 13.05 | ○ | 49,100 |
| NEW 8554142 | R6 × 1.5° | 90 | 36 | 12 | 13.58 | ○ | 60,200 |
| NEW 8554192 | R6 × 2° | 90 | 36 | 12 | 14.1 | ○ | 60,700 |
| NEW 8554242 | R6 × 3° | 90 | 36 | 12 | 15.16 | ○ | 81,900 |
| NEW 8554292 | R6 × 4° | 90 | 36 | 16 | 16.22 | ○ | 85,800 |
| NEW 8554342 | R6 × 5° | 90 | 36 | 16 | 17.3 | ○ | 89,200 |
| NEW 8554392 | R6 × 7° | 90 | 36 | 16 | 19.46 | ○ | 96,300 |

○=在庫センター標準在庫品

超硬ウルトラFXエンドミルテーパシリーズご紹介

本カタログ掲載製品以外にも様々なシリーズをご用意しております。

リブ溝加工用テーパシリーズ

FXS-RB-TPE



FXS-RB-TPB



FXS-RB-TPCR



ランナ加工用テーパシリーズ

FX-TBRC



FX-TCRC



◆製品については、常に研究・改良を行っておりますので、予告なく本カタログ掲載仕様を変更する場合があります。



| | | | | |
|-------|-----------|-----------------|----------------|-------------------|
| 本社 | 〒442-8543 | 愛知県豊川市本野ヶ原3-22 | ☎(0533)82-1111 | FAX (0533)82-1131 |
| 東部営業部 | 〒143-0025 | 東京都大田区南馬込3-25-4 | ☎(03)5709-4501 | FAX (03)5709-4515 |
| 中部営業部 | 〒465-0058 | 名古屋市名東区貴船1-9 | ☎(052)703-6131 | FAX (052)703-7775 |
| 西部営業部 | 〒550-0013 | 大阪市西区新町2-18-2 | ☎(06)6538-3880 | FAX (06)6538-3879 |

〈工具の技術的なご相談は…〉 **0120-41-5981** よい 工具は一番

コミュニケーションFAX | 0533-82-1134 | コミュニケーションE-mail | hp-info@osg.co.jp

無料メールマガジン OSG E-mail倶楽部

E-mailで最新情報をお届けします。
入会窓口は<https://www.osg.co.jp/products/club/index.php>

〈その他のご相談は…〉 E-mail: cs-info@osg.co.jp

ホームページ <http://www.osg.co.jp/>

※本書掲載内容の無断転載・複製を禁じます。※All rights reserved © OSG CORPORATION.2006
チ-41 612.AF.AF (NT) 06.06

R100

